



mPort™ Serial

*mFi Networked Serial
Interface*

Model: mPort-S



QUICK START GUIDE

Introduction

Thank you for purchasing the Ubiquiti Networks mFi™ mPort™ Serial. The mPort Serial is designed for use with the mFi platform. Once connected, you can use the mFi Controller software to monitor your devices and define automation rules using your web browser.

Package Contents



mPort Serial

Wall-Mount
BracketPoE Adapter and
Power Cord

Antenna



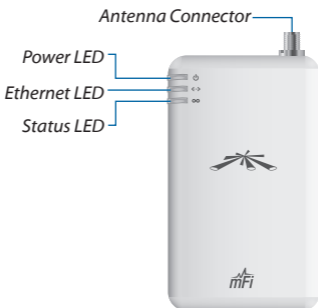
Terminal Block Screws (Qty. 4) Anchors (Qty. 4) Quick Start Guide




System Requirements

- Microsoft Windows XP, Windows Vista, Windows 7, Windows 8, or Mac OS X
- Java Runtime Environment 1.6 (or above)
- Web Browser: Mozilla Firefox, Google Chrome, or Microsoft Internet Explorer 8 (or above)

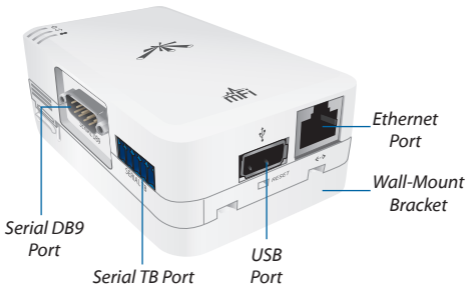
Hardware Overview

Front View



-  **Power** The *Power LED* will light steady green when the mPort Serial is properly connected to a power source.
 -  **Ethernet** The *Ethernet LED* will light steady green when an active Ethernet connection is made and flash when there is activity.
 -  **Status** The *Status LED* will light yellow when the mPort Serial is first powered on in factory default mode out of the box. The *Status LED* will light steady green when the mPort Serial has been successfully integrated into a network and is working properly. The *Status LED* will flash when the *Locate* button is used in the mFi Controller software.
- Antenna Connector** Connects to the included *Antenna*.

Side View



Serial DB9 Port Connects to a switch, router, or other device for remote access.

Serial TB (Terminal Block) Port Connects to an industrial networking device for automation, such as script execution from the mFi Controller software.

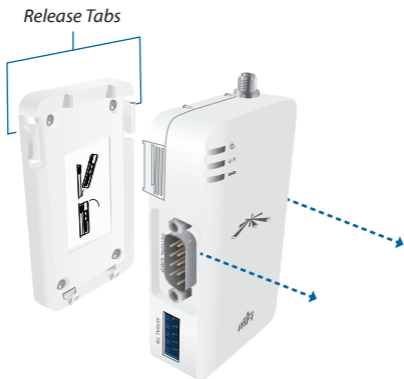
USB Port Reserved for future use.

Ethernet Port Connects to the *POE* port of the *PoE Adapter*.

Wall-Mount Bracket Wall-mounting is optional.

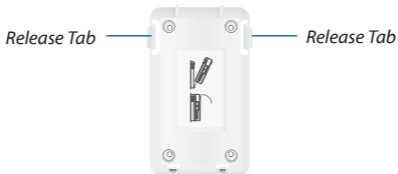
Hardware Installation

Remove the *Wall-Mount Bracket* from the mPort Serial by pressing the *Release Tabs*.

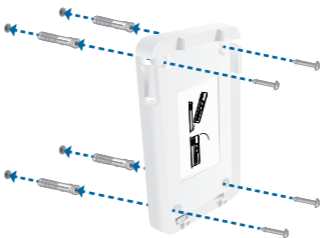


Wall-Mount (Optional)

1. Position the *Wall-Mount Bracket* with the *Release Tabs* on top.



2. To secure the *Wall-Mount Bracket* to the wall:
 - a. Use a pencil to mark the holes on the wall.
 - b. Use a 6 mm drill bit to drill the holes in the wall.
 - c. Insert the four *Anchors* into the wall.
 - d. Insert the *Screws* into the anchors.



3. Angle the mPort Serial so that the notches on the bottom of the *Wall-Mount Bracket* are inserted into the mPort Serial. Then press the mPort Serial into the *Release Tabs* and snap it into place.



Antenna Installation (Optional)

The mPort Serial uses the internal antenna by default. If you want to use an external antenna, then attach the included *Antenna* and configure its use in the mFi Controller software.



Connecting a Serial Device

Each serial port supports RS232, RS422, and RS485. Use the appropriate serial port for your serial cable (not included).



Note: Only one serial port can be used at a time.

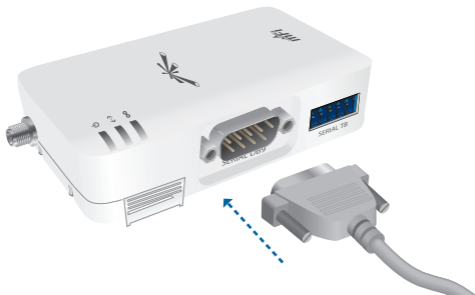
Serial DB9

1. Connect one end of the serial cable to the console port of the switch, router, or other device.



Note: A null modem may be needed; refer to the mFi User Guide at www.ubnt.com/mfi for details.

2. Connect the DB9 end of the serial cable to the *Serial DB9* port of the mPort Serial.



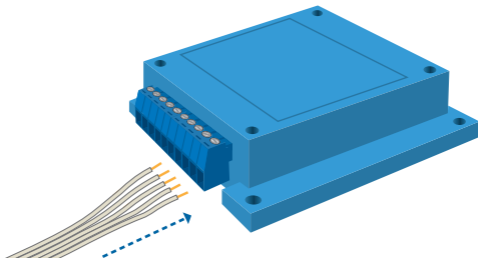
Serial TB

The Serial TB port is labeled for RS485 pinout. The table lists the pinouts for RS232, RS422, and RS485. For more information, refer to the mFi User Guide available at www.ubnt.com/mfi

Function	RX		TX		Ground
Pinout	R-	R+	T-	T+	G
RS232	✓		✓		✓
RS422	✓	✓	✓	✓	*
RS485	✓	✓	✓	✓	*

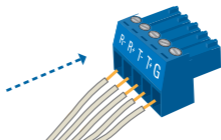
* Technically not needed.

1. Wire one end of the serial cable to an industrial networking device.

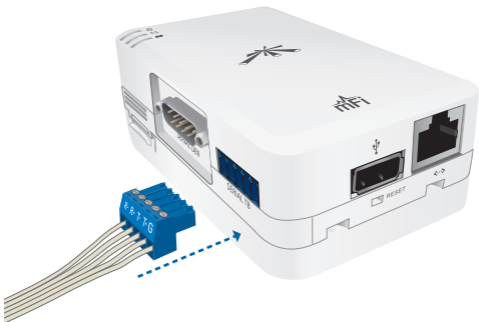


Note: Wiring will vary depending on your device.

2. Wire the other end of the serial cable to the *Terminal Block* included with the mPort Serial.

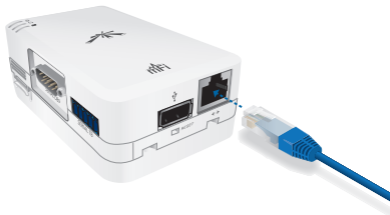


3. Insert the *Terminal Block* into the *Serial TB* port of the mPort Serial.

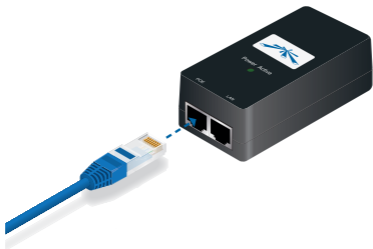


Connecting Ethernet and Power

1. Connect an Ethernet cable to the *Ethernet* port on the mPort Serial.



2. Connect the other end of the Ethernet cable to the Ethernet port labeled **POE** on the *PoE Adapter*.

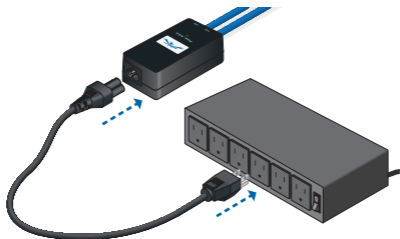


3. Connect an Ethernet cable from your LAN to the Ethernet port labeled **LAN** on the *PoE Adapter*.



Note: Wi-Fi settings for the mPort Serial can be configured via LAN or by connecting an Ethernet cable directly from your computer to the *LAN* port on the *PoE Adapter*. For details, refer to *Accessing the Configuration Portal* on page 19.

4. Connect the power cord to the power port on the *PoE Adapter*. Connect the other end of the power cord to a power outlet. The Power LED should light up on the mPort Serial.



Software Download and Installation

For local mFi Controller installations, the mFi Controller software is installed just once when you initially create a mFi network. It is not necessary to go through the software installation process every time you add another mFi device.



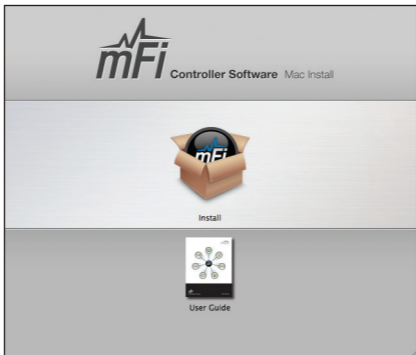
Note: If you are using the cloud, there is no need to install the mFi Controller software locally. Skip to *Accessing the Configuration Portal* on page 19.

The mFi Controller software can be downloaded from the Ubiquiti Networks website.

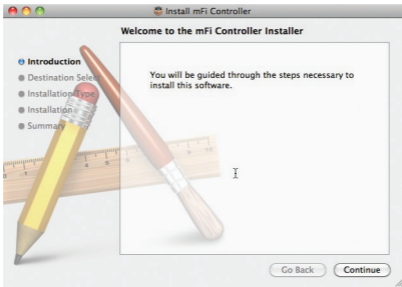
1. Go to **downloads.ubnt.com/mfi**
2. Mac users should download **mFi.dmg** and Windows users should download **mFi-installer.exe**.
3. Follow the instructions for your computer type.

Mac Users

1. Click the **Install** icon.



2. Click **Continue** and follow the on-screen instructions to install the software.



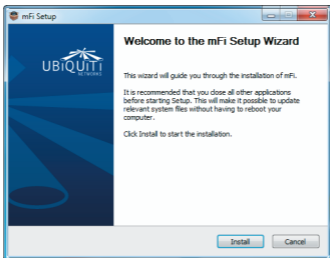
3. Go to **Go > Applications** and double-click the **mFi** icon.



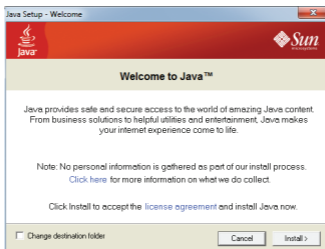
Proceed to *Configuring the mFi Controller Software* on page 16.

PC Users

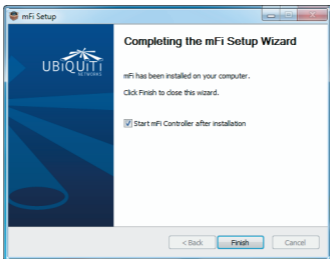
1. Launch **mFi-installer.exe**.
2. Click **Install**.



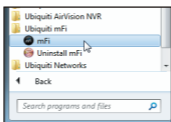
3. If your computer doesn't have Java 1.6 or above installed, you will be prompted to install it. Click **Install** to continue.



4. Ensure that the *Start mFi Controller after installation* option is checked and click **Finish**.



Note: The mFi Controller software can also be launched from **Start > All Programs**.

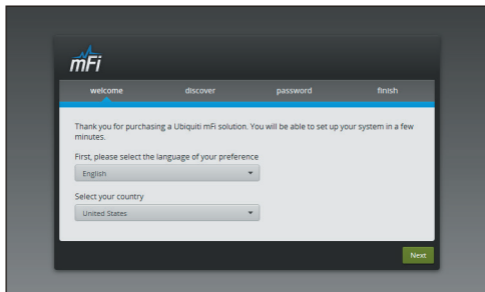


Configuring the mFi Controller Software

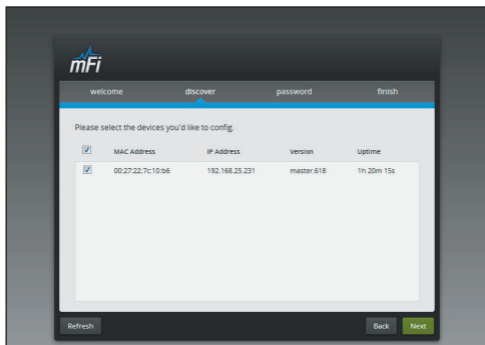
1. The mFi Controller software startup will begin. Click **Launch a Browser to Manage the Network**.



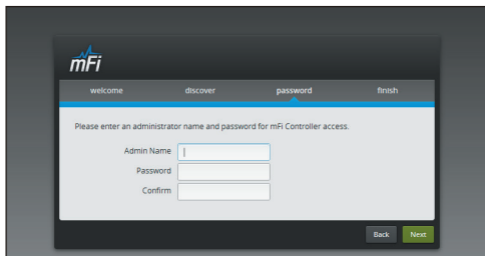
2. The *mFi Configuration Wizard* will appear the first time you launch the mFi Controller software. On the *Welcome* screen, select your language and country. Click **Next**.



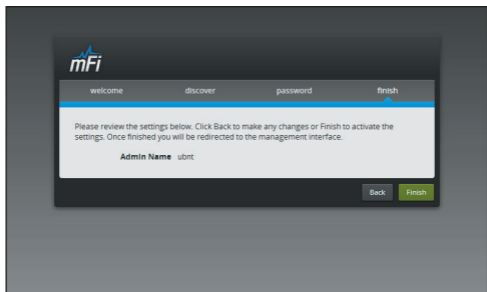
3. Select the device(s) that you want to configure. The **Refresh** button can be used to refresh the list of devices. Click **Next** to continue.



4. Enter an administrator name in the *Admin Name* field. Enter a password in the *Password* and *Confirm* fields. Click **Next**.



5. Click **Finish** to confirm your settings.



6. A login screen will appear for the mFi Controller management interface. Enter the *Admin Name* and *Password* that you created and click **Login**.



Accessing the Configuration Portal

You need to connect to the Configuration Portal to configure any of the following:

- Cloud access
- Access to local mFi Controller on a different IP network
- Wireless network access (Wi-Fi settings)



Note: If you are not using these configurations, you do not need to access the Configuration Portal.

The Configuration Portal can be accessed in two ways:

- Connect an Ethernet cable from your computer to the *LAN* port on the *PoE Adapter* and configure your computer with a static IP address.
- Connect an Ethernet cable from your DHCP-enabled LAN to the *LAN* port on the *PoE Adapter*.

Configuration Portal via Ethernet to Computer

1. Make sure that your computer is connected via Ethernet to the **LAN** port on the *PoE Adapter*.



WARNING: Do not connect the computer to the port labeled *POE* on the *PoE Adapter*.

2. Configure the Ethernet adapter on your computer with a static IP address on the 192.168.1.x subnet.
3. Launch your web browser and type **http://192.168.1.20** in the address field. Press **enter** (PC) or **return** (Mac).

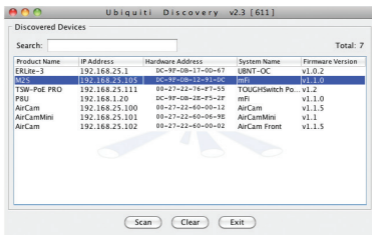


4. Go to *Configuration Portal Interface Settings* on page 21.

Configuration Portal via LAN with DHCP

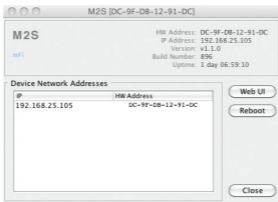
If it is not already installed, download the Ubiquiti Device Discovery Tool (v2.3) at www.ubnt.com/download#app

1. Launch the *Ubiquiti Device Discovery Tool*.
2. A list of Ubiquiti devices on the network will appear. Locate the appropriate device (named M2S) under *Product Name* and double-click it.



Note: If you have more than one of the same device model, you can determine which one you are selecting by checking the Hardware (MAC) Address on the device label.

3. Click **WEB UI** on the right.



Configuration Portal Interface Settings

1. The login screen will appear. Enter **ubnt** in the *Username* and *Password* fields.

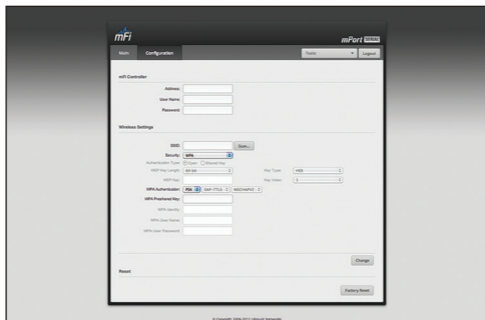


Note: Once a device has been connected to the cloud, the *Configuration Portal* login information changes. The new username/password combination can be found on the *Info* tab in the cloud UI.

2. The *Main* tab of the *Configuration Portal* will appear. Click the **Configuration** tab.



3. Enter your configuration information on the *Configuration* tab:




mFi Controller Enter the mFi Controller settings:

- a. Enter the mFi Controller address.
 - For local mFi Controller installations, this is the IP address and http port used by the Controller. (The port is usually 6080, for example: *192.168.25.161:6080* or *mfi.acme.com:6080*)
 - For cloud users, this is *mfi.ubnt.com*
- b. Enter the User Name and Password.
 - For local mFi Controller installations, this is the admin name and password defined during the mFi Configuration Wizard.
 - For cloud users, this is the username and password that you registered at *mfi.ubnt.com*

Wireless Settings To use the mPort Serial on a Wi-Fi network, configure the *Wireless Settings*:

- a. Click **Scan** for a list of available SSIDs. Select the appropriate SSID or type in the name manually in the *SSID* field.
- b. Select the appropriate *Security* and *Authentication* settings for your network.
- c. Enter your network key.

After you've entered the necessary settings, click **Change**. You will be asked to apply the changes; click **Apply**.

4. Log in to the mFi Controller.
5. The mPort Serial  icon appears in the left panel under the *Drag on to Map* heading. Once you've customized your map, you can position the mPort Serial in the appropriate location.



For additional details on the mFi Controller software, refer to the User Guide on our website at www.ubnt.com/mfi

Specifications

mPort Serial	
Dimensions	100 x 60 x 27.5 mm (H x W x D) 100 x 60 x 36.5 mm (with Bracket)
Weight	119 g (with Bracket)
Power Supply	24V, 0.5A Surge Protection Integrated PoE Adapter (Included)
Max. Power Consumption	3 W
Networking Interface	(1) 10/100 Ethernet Port
Ports	(1) DB9 Serial Port (1) Terminal Block Serial Port
WiFi Standards	802.11b/g/n
Serial Protocols	RS232, RS422, RS485
Memory	16 MB RAM, 8 MB Flash
LEDs	3 LEDs (Power, Ethernet, Status)
Mounting	Wall-Mount Bracket (Included)
Operating Temperature	-10 to 70° C
Operating Humidity	5 to 80% Condensing

General Warranty

UBIQUITI NETWORKS, Inc (“UBIQUITI NETWORKS”) represents and warrants that the Products furnished hereunder shall be free from defects in material and workmanship for a period of one (1) year from the date of shipment by UBIQUITI NETWORKS under normal use and operation. UBIQUITI NETWORKS sole and exclusive obligation under the foregoing warranty shall be to repair or replace, at its option, any defective Product that fails during the warranty period. The expense of removal and reinstallation of any item is not included in this warranty.

The foregoing warranty is exclusive and in lieu of all other warranties, express or implied, including the implied warranties of merchantability and fitness for a particular purpose and any warranties arising from a course of dealing, usage or trade practice with respect to the products. Repair or replacement in the manner provided herein shall be the sole and exclusive remedy of Buyer for breach of warranty and shall constitute fulfillment of all liabilities of UBIQUITI NETWORKS with respect to the quality and performance of the Products. UBIQUITI NETWORKS reserves the right to inspect all defective Products (which must be returned by Buyer to UBIQUITI NETWORKS factory freight prepaid).

No Products will be accepted for replacement or repair without obtaining a Return Materials Authorization (RMA) number from UBIQUITI NETWORKS. Products returned without an RMA number will not be processed and will be returned to Buyer freight collect. UBIQUITI NETWORKS shall have no obligation to make repairs or replacement necessitated by catastrophe, fault, negligence, misuse, abuse, or accident by Buyer, Buyer’s customers or any other parties. The warranty period of any repaired or replaced. Product shall not extend beyond its original term.

EXCEPT FOR ANY EXPRESS WARRANTIES PROVIDED HEREIN, UBIQUITI NETWORKS’ PRODUCTS AND SERVICES ARE PROVIDED “AS IS,” WITHOUT WARRANTY OR CONDITION OF ANY KIND, EITHER EXPRESS OR IMPLIED. UBIQUITI NETWORKS, ITS AFFILIATES, AND ITS AND THEIR THIRD PARTY DATA, SERVICE, SOFTWARE AND HARDWARE PROVIDERS HEREBY DISCLAIM AND MAKE NO OTHER REPRESENTATION OR WARRANTY OF ANY KIND, EXPRESS, IMPLIED OR STATUTORY, INCLUDING BUT NOT LIMITED TO REPRESENTATIONS, GUARANTEES, OR WARRANTIES OF MERCHANTABILITY, ACCURACY, QUALITY OF SERVICE OR RESULTS, AVAILABILITY, SATISFACTORY QUALITY, LACK OF VIRUSES, TITLE, QUIET ENJOYMENT, FITNESS FOR A PARTICULAR PURPOSE AND NON-INFRINGEMENT. BUYER ACKNOWLEDGE THAT NEITHER UBIQUITI NETWORKS NOR ITS THIRD PARTY PROVIDERS CONTROLS BUYER’S EQUIPMENT OR

THE TRANSFER OF DATA OVER COMMUNICATIONS FACILITIES, INCLUDING THE INTERNET, AND THAT THE PRODUCTS AND SERVICES MAY BE SUBJECT TO LIMITATIONS, INTERRUPTIONS, DELAYS, CANCELLATIONS AND OTHER PROBLEMS INHERENT IN THE USE OF THE COMMUNICATIONS FACILITIES. UBIQUITI NETWORKS, ITS AFFILIATES AND ITS AND THEIR THIRD PARTY PROVIDERS ARE NOT RESPONSIBLE FOR ANY INTERRUPTIONS, DELAYS, CANCELLATIONS, DELIVERY FAILURES, DATA LOSS, CONTENT CORRUPTION, PACKET LOSS, OR OTHER DAMAGE RESULTING FROM THESE PROBLEMS.

Warranty Conditions

The foregoing warranty shall apply only if:

- (I) The Product has not been subjected to misuse, neglect or unusual physical, electrical or electromagnetic stress, or some other type of accident.
- (II) No modification, alteration or addition has been made to the Product by persons other than UBIQUITI NETWORKS or UBIQUITI NETWORK'S authorized representatives or otherwise approved by UBIQUITI NETWORKS.
- (III) The Product has been properly installed and used at all times in accordance, and in all material respects, with the applicable Product documentation.
- (IV) All Ethernet cabling runs use CAT5 (or above) shielded cabling.

Disclaimer: UBIQUITI NETWORKS does not warrant that the operation of the products is error-free or that operation will be uninterrupted. In no event shall UBIQUITI NETWORKS be responsible for damages or claims of any nature or description relating to system performance, including coverage, buyer's selection of products for buyer's application and/or failure of products to meet government or regulatory requirements.

Returns

In the unlikely event a defect occurs, please work through the dealer or distributor from which this product was purchased.

Safety Notices

1. Read, follow, and keep these instructions.
2. Heed all warnings.
3. Only use attachments/accessories specified by the manufacturer.



WARNING: Do not use this product in location that can be submerged by water.



WARNING: Avoid using this product during an electrical storm. There may be a remote risk of electric shock from lightning.

Electrical Safety Information

1. Compliance is required with respect to voltage, frequency, and current requirements indicated on the manufacturer's label. Connection to a different power source than those specified may result in improper operation, damage to the equipment or pose a fire hazard if the limitations are not followed.
2. There are no operator serviceable parts inside this equipment. Service should be provided only by a qualified service technician.
3. This equipment is provided with a detachable power cord which has an integral safety ground wire intended for connection to a grounded safety outlet.
 - a. Do not substitute the power cord with one that is not the provided approved type. Never use an adapter plug to connect to a 2-wire outlet as this will defeat the continuity of the grounding wire.
 - b. The equipment requires the use of the ground wire as a part of the safety certification, modification or misuse can provide a shock hazard that can result in serious injury or death.
 - c. Contact a qualified electrician or the manufacturer if there are questions about the installation prior to connecting the equipment.
 - d. Protective earthing is provided by Listed AC adapter. Building installation shall provide appropriate short-circuit backup protection.
 - e. Protective bonding must be installed in accordance with local national wiring rules and regulations.

Compliance

FCC

Changes or modifications not expressly approved by Ubiquiti Networks, Inc. could void the user's authority to operate the equipment.

This device complies with Part 15 of the FCC Rules. Operation is subject to the following two conditions:

1. This device may not cause interference, and
2. This device must accept any interference, including interference that may cause undesired operation of the device.

NOTE: This equipment has been tested and found to comply with the limits for a Class A digital device, pursuant to part 15 of the FCC Rules. These limits are designed to provide reasonable protection against harmful interference when the equipment is operated in a commercial environment. This equipment generates, uses, and can radiate radio frequency energy and, if not installed and used in accordance with the instruction manual, may cause harmful interference to radio communications. Operations of this equipment in a residential area is likely to cause harmful interference in which case the user will be required to correct the interference at his own expense.

RF Exposure Warning

The transceiver described here emits radio frequency energy. Although the power level is low, the concentrated energy from a directional antenna may pose a health hazard. Do not allow people to come closer than 20 cm to the antenna when the transmitter is operating.

Additional information on RF exposure is available on the Internet at www.fcc.gov/oet/info/documents/bulletins

L'émetteur-récepteur décrit ici émet de l'énergie de fréquence radio. Bien que le niveau de puissance est faible, l'énergie concentrée à partir d'une antenne directionnelle peut présenter un danger pour la santé. Ne pas permettre aux gens de se rapprocher de 20 cm à l'antenne lorsque l'émetteur est en marche.

Des renseignements supplémentaires sur l'exposition aux RF est disponible sur Internet à www.fcc.gov/oet/info/documents/bulletins

Industry Canada

Under Industry Canada regulations, this radio transmitter may only operate using an antenna of a type and maximum (or lesser) gain approved for the transmitter by Industry Canada. To reduce potential radio interference to other users, the antenna type and its gain should be so chosen that the equivalent isotropically radiated power (e.i.r.p.) is not more than that necessary for successful communication.

Conformément à la réglementation d'Industrie Canada, le présent émetteur radio peut fonctionner avec une antenne d'un type et d'un gain maximal (ou inférieur) approuvé pour l'émetteur par Industrie Canada. Dans le but de réduire les risques de brouillage radioélectrique à l'intention des autres utilisateurs, il faut choisir le type d'antenne et son gain de sorte que la puissance isotrope rayonnée équivalente (p.i.r.e.) ne dépasse pas l'intensité nécessaire à l'établissement d'une communication satisfaisante.

This radio transmitter (FCC ID: SWX-VPS, IC: 6545A-VPS) has been approved by Industry Canada to operate with the antenna types listed below with the maximum permissible gain and required antenna impedance for each antenna type indicated. Antenna types not included in this list, having a gain greater than the maximum gain indicated for that type, are strictly prohibited for use with this device.

Le présent émetteur radio (FCC ID: SWX-VPS, IC: 6545A-VPS) a été approuvé par Industrie Canada pour fonctionner avec les types d'antenne énumérés ci-dessous et ayant un gain admissible maximal et l'impédance requise pour chaque type d'antenne. Les types d'antenne non inclus dans cette liste, ou dont le gain est supérieur au gain maximal indiqué, sont strictement interdits pour l'exploitation de l'émetteur.

Antenna Type

Omni with a gain of 4 dBi maximum

Type d'antenne

Omni avec un gain de 4 dBi maximale

CE Marking

CE marking on this product represents the product is in compliance with all directives that are applicable to it.

Declaration of Conformity

Česky [Czech] UBIQUITI NETWORKS tímto prohlašuje, že tento UBIQUITI NETWORKS device, je ve shodě se základními požadavky a dále s ostatními ustanoveními směrnice 1999/5/ES.

Dansk [Danish] Undertegnede UBIQUITI NETWORKS erklærer herved, at følgende udstyr UBIQUITI NETWORKS device, overholder de væsentlige krav og øvrige relevante krav i direktiv 1999/5/EF.

Nederlands [Dutch] Hierbij verklaart UBIQUITI NETWORKS dat het toestel UBIQUITI NETWORKS device, in overeenstemming is met de essentiële eisen en de andere relevante bepalingen van richtlijn 1999/5/EG.

English Hereby, UBIQUITI NETWORKS, declares that this UBIQUITI NETWORKS device, is in compliance with the essential requirements and other relevant provisions of Directive 1999/5/EC.

Eesti [Estonian] Käesolevaga kinnitab UBIQUITI NETWORKS seadme UBIQUITI NETWORKS device, vastavust direktiivi 1999/5/EÜ põhinõuetele ja nimetatud direktiivist tulenevatele teistele asjakohastele sätetele.

Suomi [Finnish] UBIQUITI NETWORKS vakuuttaa täten että UBIQUITI NETWORKS device, tyypinen laite on direktiivin 1999/5/EY oleellisten vaatimusten ja sitä koskevien direktiivin muiden ehtojen mukainen.

Français [French] Par la présente UBIQUITI NETWORKS déclare que l'appareil UBIQUITI NETWORKS, device est conforme aux exigences essentielles et aux autres dispositions pertinentes de la directive 1999/5/CE.

Deutsch [German] Hiermit erklärt UBIQUITI NETWORKS, dass sich diese UBIQUITI NETWORKS device, in Übereinstimmung mit den grundlegenden Anforderungen und den anderen relevanten Vorschriften der Richtlinie 1999/5/EG befindet.“ (BMW i)

Ελληνική [Greek] ΜΕ ΤΗΝ ΠΑΡΟΥΣΑ UBIQUITI NETWORKS ΔΗΛΩΝΕΙ ΟΤΙ UBIQUITI NETWORKS device, ΣΥΜΜΟΡΦΩΝΕΤΑΙ ΠΡΟΣ ΤΙΣ ΟΥΣΙΩΔΕΙΣ ΑΠΑΙΤΗΣΕΙΣ ΚΑΙ ΤΙΣ ΛΟΙΠΕΣ ΣΧΕΤΙΚΕΣ ΔΙΑΤΑΞΕΙΣ ΤΗΣ ΟΔΗΓΙΑΣ 1999/5/ΕΚ.

Magyar [Hungarian] Alulírott, UBIQUITI NETWORKS nyilatkozom, hogy a UBIQUITI NETWORKS device, megfelel a vonatkozó alapvető követelményeknek és az 1999/5/EC irányelv egyéb előírásainak.

Íslenska [Icelandic] Hér með lýsir UBIQUITI NETWORKS yfir ví a UBIQUITI NETWORKS device, er í samræmi við grunnkröfur og allar kröfur, sem gerar eru í tilskipun 1999/5/EC.

Italiano [Italian] Con la presente UBIQUITI NETWORKS dichiara che questo UBIQUITI NETWORKS device, è conforme ai requisiti essenziali ed alle altre disposizioni pertinenti stabilite dalla direttiva 1999/5/CE.

Latviski [Latvian] Ar o UBIQUITI NETWORKS deklar , ka UBIQUITI NETWORKS device, atbilst Direkt vas 1999/5/EK b tiskaj m pras b m un citiem ar to saist tajiem noteikumiem.

Lietuviškai [Lithuanian] UBIQUITI NETWORKS deklaruoja, kad šis UBIQUITI NETWORKS įrenginys atitinka esminius reikalavimus ir kitas 1999/5/EB Direktyvos nuostatas.

Malti [Maltese] Hawnhekk, UBIQUITI NETWORKS, jiddikjara li dan UBIQUITI NETWORKS device, jikkonforma mal- ti ijjiet essenzjali u ma provvedimenti o rajn relevanti li hemm fid-Direttiva 1999/5/EC.

Norsk [Norwegian] UBIQUITI NETWORKS erklærer herved at utstyret UBIQUITI NETWORKS device, er i samsvar med de grunnleggende krav og øvrige relevante krav i direktiv 1999/5/EF.

Slovensky [Slovak] UBIQUITI NETWORKS t mto vyhlasuje, e UBIQUITI NETWORKS device, sp a základné po iadavky a v etky príslu né ustanovenia Smernice 1999/5/ES.

Svenska [Swedish] Härmed intygar UBIQUITI NETWORKS att denna UBIQUITI NETWORKS device, står i överensstämmelse med de väsentliga egenskapskrav och övriga relevanta bestämmelser som framgår av direktiv 1999/5/EG.

Español [Spanish] Por medio de la presente UBIQUITI NETWORKS declara que el UBIQUITI NETWORKS device, cumple con los requisitos esenciales y cualesquiera otras disposiciones aplicables o exigibles de la Directiva 1999/5/CE.

Polski [Polish] Niniejszym, firma UBIQUITI NETWORKS o wiadcza, e produkt serii UBIQUITI NETWORKS device, spełnia zasadnicze wymagania i inne istotne postanowienia Dyrektywy 1999/5/EC.

Português [Portuguese] UBIQUITI NETWORKS declara que este UBIQUITI NETWORKS device, está conforme com os requisitos essenciais e outras disposições da Directiva 1999/5/CE.

Română [Romanian] Prin prezenta, UBIQUITI NETWORKS declară că acest dispozitiv UBIQUITI NETWORKS este în conformitate cu cerințele esențiale și alte prevederi relevante ale Directivei 1999/5/CE.

mFi Products

Ubiquiti Networks offers a variety of products for the mFi platform. For additional details, visit www.ubnt.com/mfi



Ceiling Mount
Motion Sensor
mFi-MSc



Wall Mount
Motion Sensor
mFi-MSW



Temperature
Sensor
mFi-THS



Current Sensor
mFi-CS



Door Sensor
mFi-DS



Thermostat
Coming Soon!



mPort
mPort



Power Adapter
mPower mini



Power Strip
mPower



Power Strip
mPower PRO

Support **support.ubnt.com**

Wiki Page **wiki.ubnt.com**

Support Forum **forum.ubnt.com**

Downloads **downloads.ubnt.com**

